

enrich360[®] Food Waste Bio-Dehydrator

Food waste is placed inside the food waste Bio-Dehydrator where it goes through a fully automated process of dehydration, sterilisation and volume reduction (up to 90%). No additives are required – no water, no sawdust, no enzymes. The equipment requires only the input of electrical power for motors and heat energy.

Food waste is simply loaded into the hopper. The cycle takes from 8 hours to complete. At the end of the process, the machine is emptied completely and is immediately ready to receive the next load (batch loading). The machine can be loaded and run seven days a week – no need for any “lay days” with this process.

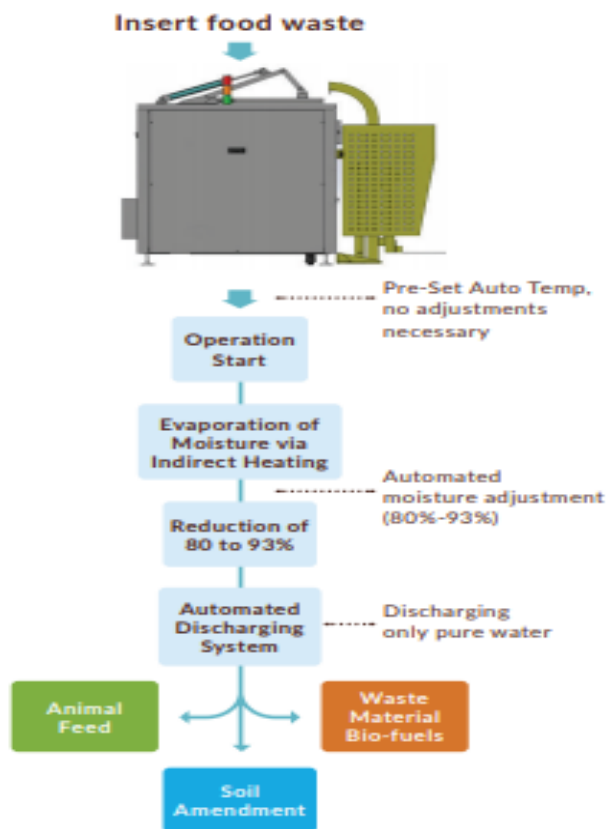
Everything goes in; meat, fish, fruit, vegetables, coffee grinds, flower displays. The entire procedure happens in a closed reactor chamber so that odour issues are non-existent. Mixed loads are recommended.

The product from this system will be utilised as a directly-applied organic fertiliser, a pelletised fertiliser or as a compost enhancer. Instead of the greenhouse gases and leachate that would be generated in landfill, the food waste we treat is being converted into a fantastic, sustainable resource.



E200M Pictured

So how does it work?



- Converts and reduces food waste by 80-93% into sterile biomass soil amendment.
- Processes all organics including meats, fish, fruit, vegetables and paper and paper napkins up to 20% of the load.
- Machine separates the moisture content by indirect heating and converts to steam.
- Steam is then condensed and discharged into trade waste or sewer as distillate (100% sterile condensate No BOD, No TSS).
- The dried remnants are discharged free of bacteria and pathogens.
- The remaining soil amendment can be collected and diverted from landfill throughout metropolitan, regional and remote areas.

Features and benefits

Programmable Logic Controller (PLC)	Digital Process Control System and Monitoring
Motor Overload Sensor/electro mechanical clutch	Eliminates jamming and damage to machine internally.
Moisture Sensor (Instead of Timer Operation)	Saves electricity and shuts down when dry
Paddle Shaft with Dull Blades	Macerates bulk foods and larger produce
Proprietary Cooling System	Fastest processing of any dehydrator in the market
Automatic Open & Close	Hatch Opens to accept waste and closes afterwards (on auto load models)
Automatic Bin/ Lifter	Hands free safe loading of food waste
Bin/Counter	Prevents overloading of the machine
Simple One-Button operation	Start/Stop/Load/Unload User friendly with simple to understand instructions
Stainless Steel Body	Easy to clean and maintain, long life and will never rust.
Air Tight Sealing	No leakage during operation.
Quiet Operation	Avoid noise pollution
Unique Heating System, No Venting	Simple and easy to install
Output (Sterile Biomass and Condensate)	No pathogens, no BOD and no TSS
Enclosed Lifting Mechanisms	Machine safety cage keeps workers safe from moving parts (on auto load models)
Discharge Safety Lock	Automatic shut off when discharge chutes are opened
Emergency Shut-off Button	Accessible to all users

Machine Specifications

Model	E33M	E55M	E110M	E165M	E220M	E330M	E330A	E550MS	E550AS	E770A	E1100A
Capacity Kg	22-33	33-55	65-110	100-165	130-220	220-330	220-330	330-550	330-550	460-770	670-1100
Drum Volume	55	85L	155L	277L	350L	470L	470L	900L	90	1070L	1833L
Cycle Time Hrs	8-12	10-13	12-15	14-18	14-19	15-20	15-19	17-22	17-22	18-23	18-23
NOTE:	CYCLE TIME WILL VARY FROM LOAD TO LOAD DEPENDING ON THE MOISTURE CONTENT OF INPUTS										
Weight	200kg	250kg	450kg	500kg	650kg	800kg	900kg	1600kg	1700kg	1900kg	2300kg
Width (mm)	802	802	1103	1082	1452	1652	1652	2234	2234	2234	2234
Depth (mm)	752	752	1034	1352	1182	1232	1232	1392	1392	1492	1692
Height (mm)	971	1201	1104	1174	1174	1259	1381	1604	1604	1654	1864
Auto Bin Lifter	No	No	No	No	No	No	Yes	No	Yes	Yes	Yes
Width W/Lift (mm)	X	X	X	X	X	X	2075	X	2763	2763	2763
Height W/Lift (mm)	X	X	X	X	X	X	1457	X	1681	1731	1941
External Condenser Size & Weight (L x W x H)	X	X	X	X	X	X	X	910 x 760 x 985mm 150KG	910 x 760 x 985mm 150KG	1310 x 7600 x 965mm 200KG	1310 x 7600 x 965mm 200KG
Ampere Calculation - 415V / 50 Hz											
Oil Heater	3,300 Watt x 1	3,300 Watt x 1	3,300 Watt x 2	3,300 Watt x 2	3,300 Watt x 3	3,300 Watt x 4	3,300 Watt x 4	3,300 Watt x 6	3,300 Watt x 6	3,300 Watt X 8	3,300 Watt x 12
Motor	210	210	400	750	750	1,500	1,500	2,200	2,200	3,300	3,700
Air Heater	X	X	1,500	1500	1,500	1,500	1,500	1,500 x 2	1,500 x 2	1,500 x 2	2,000 x 2
Condenser	9 x 2	9 x 2	15 x 2	15 x 2	66 x 2	66 x 2	66 x 2	100 x 2	100 x 2	200 x 2	200 x 2
Blower	35	35	35	35	50	50	50	50 x 2	50 x 2	50 x 2	50 x 4
Pump	X	X	110 x 1	110 x 1	110 x 1	110 x 1	110 x 1	110 x 3	110 x 3	110 x 3	110 x 5
Auto Lift	X	X	X	X	X	X	1,500	X	1,500	1,500	1,500
Total Watt (Sum of each components)	3,563 Watt	3,563 Watt	8,675 Watt	9,025 Watt	12,442 Watt	16,492 Watt	17,992 Watt	25,630 Watt	27,130 Watt	35,430 Watt	49,950 Watt
Max. Amp = (Total Watt /415v/1.73)	5.5 amp	5.5 amp	13.3 amp	13.8 amp	19.1 amp	25.3 amp	27.6 amp	39.3 amp	41.6 amp	54.3 amp	76.5 amp
Av. Amp (70%) during operation	3.8 amp	3.8 amp	9.3 amp	9.7 amp	13.3 amp	17.7 amp	19.3 amp	27.5 amp	29.1 amp	38.0 amp	53.6 amp
Electricity Consumption / Hr (Average 70%)	2.45Kw / Hr	2.45Kw / Hr	6Kw / Hr	7Kw / Hr	8.7Kw / Hr	11.5Kw / Hr	11.5Kw / Hr	17.9Kw / Hr	17.9Kw / Hr	23.8Kw / Hr	33.6Kw / Hr
Electricity Consumption per Average Cycle	22Kw	24.5Kw	72Kw	84Kw	121.8Kw	172.5Kw	172.5Kw	304.3Kw	304.3Kw	428.4Kw	604.8Kw
* The calculation above may differ depending on local electricity. * 50Hz: + 10% * Specification may be change without prior notice											

What's in, what's not?



enrich360[™]
FOOD · FARM · FUTURE

ORGANICS RECYCLING

Compostable Only

ACCEPTABLE FOOD Cooked or Raw

Fruit & Vegetables

Tea Leaves,
Coffee Beans
& Grounds


Bread, Pasta & Rice


Meat & Fish


Crab & Egg Shells


Fish or Chicken Bones



NOT ACCEPTED

**Glass, Metals, Paper or
Plastics of any type**


**Oyster, Scallop
& Nut Shells**


**Large Quantities
of Water, Milk &
Cooking Oils**
Corn Husks

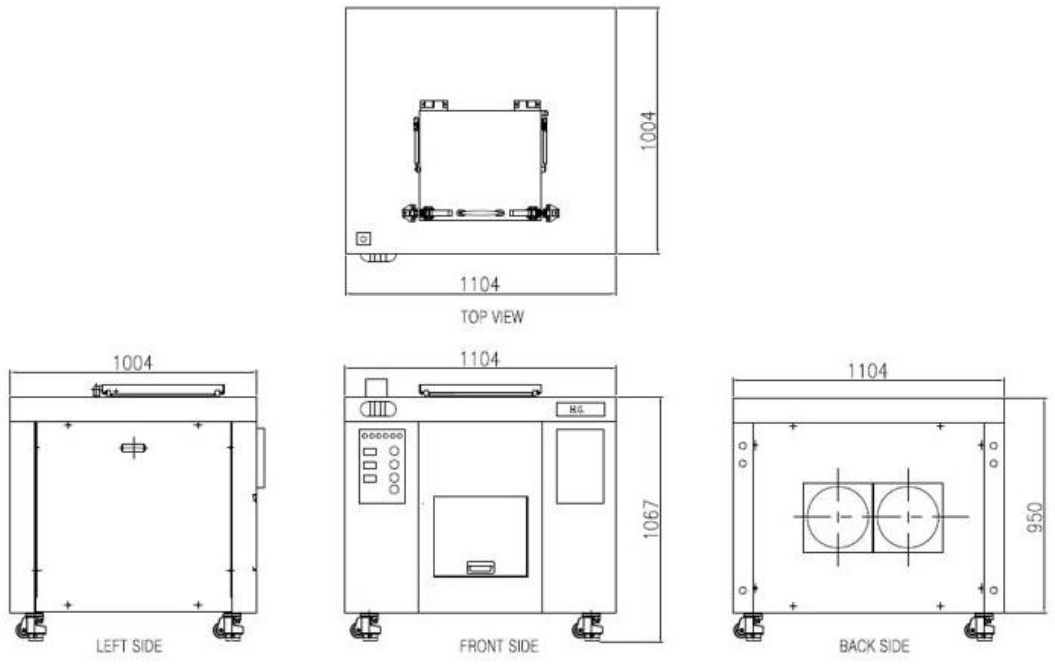

**Large Bones from
Thigh & Vertebrate**



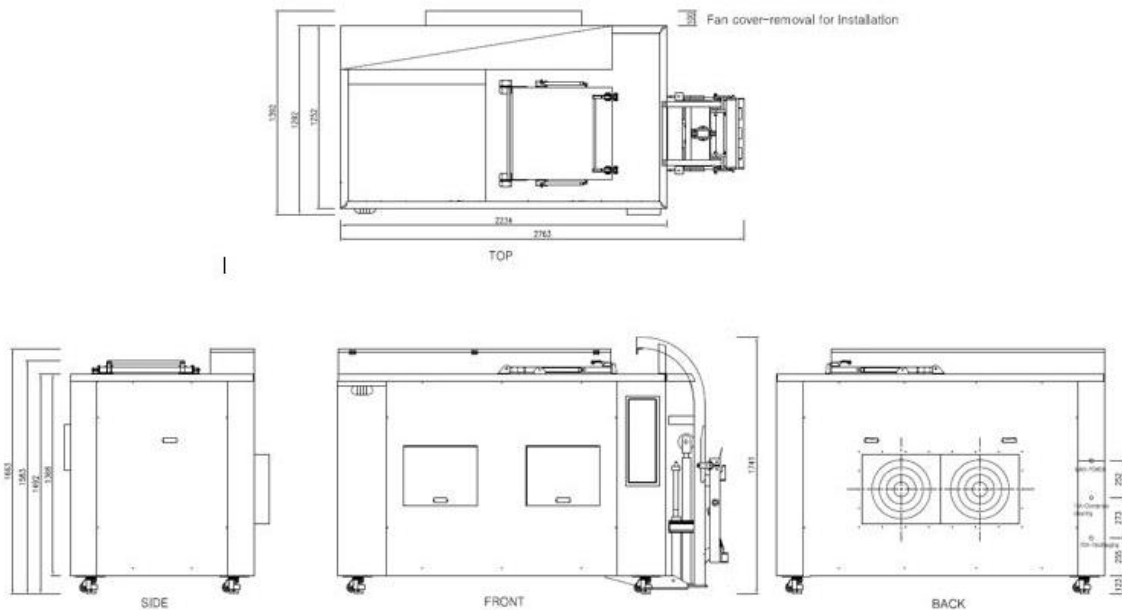
Flowers and Compostable Serviettes are OK!

enrich360[™] | FOOD - FARM - FUTURE | enrich360.com.au

E110M PLANS



E550AS PLANS



Other sizes available on request

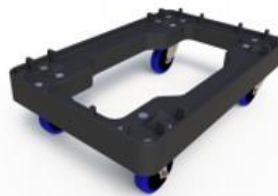
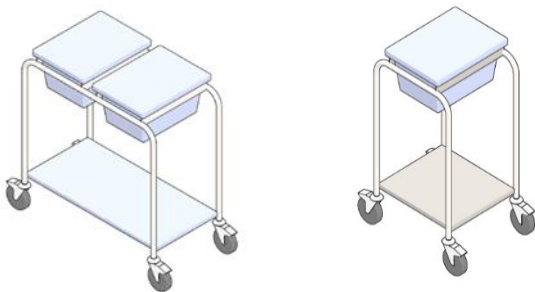
enrich360® enviro-crate

enrich360 pricing includes enviro-crate which are manufactured from 100% recycled material and are 100% recyclable. They can be stacked on top of each other and are also nest-able.

enviro-crate is Good Environmental Choice Australia (GECA) approved and manufactured in Sydney by A+ PLASTICS.

enrich360® Trolleys

Price on Application



Case Study **IKEA Richmond**

IKEA Richmond was the first to implement the enrich360® Program sites implemented in April 2018 and diverted of over 80 tonnes of food waste in just one year and this has created over 8 tonnes of fertiliser which has all been used on Victorian Farms to improve soil and help grow better more nutritious food. This process allows farmers to receive the outputs directly from the machines to use as a slow release fertiliser and also creates a much cleaner, safer way for Composters to receive food waste as a nutrient boost for addition to their compost.

The process reduces the volume of the food waste by up to 93% meaning food waste can be collected from IKEA just 2-3 days per week only and with their 220kg unit the collections for a week is just 10-15 of our small 22 litre bins. Collections are done by In2food produce supply trucks returning to their depot utilising a reverse logistics – no large smelly rubbish trucks.

The biomass when processed at IKEA is sterile and pathogen free meaning it doesn't smell, doesn't attract rodents or insects.

IKEA® Richmond closes the loop with Enrich360

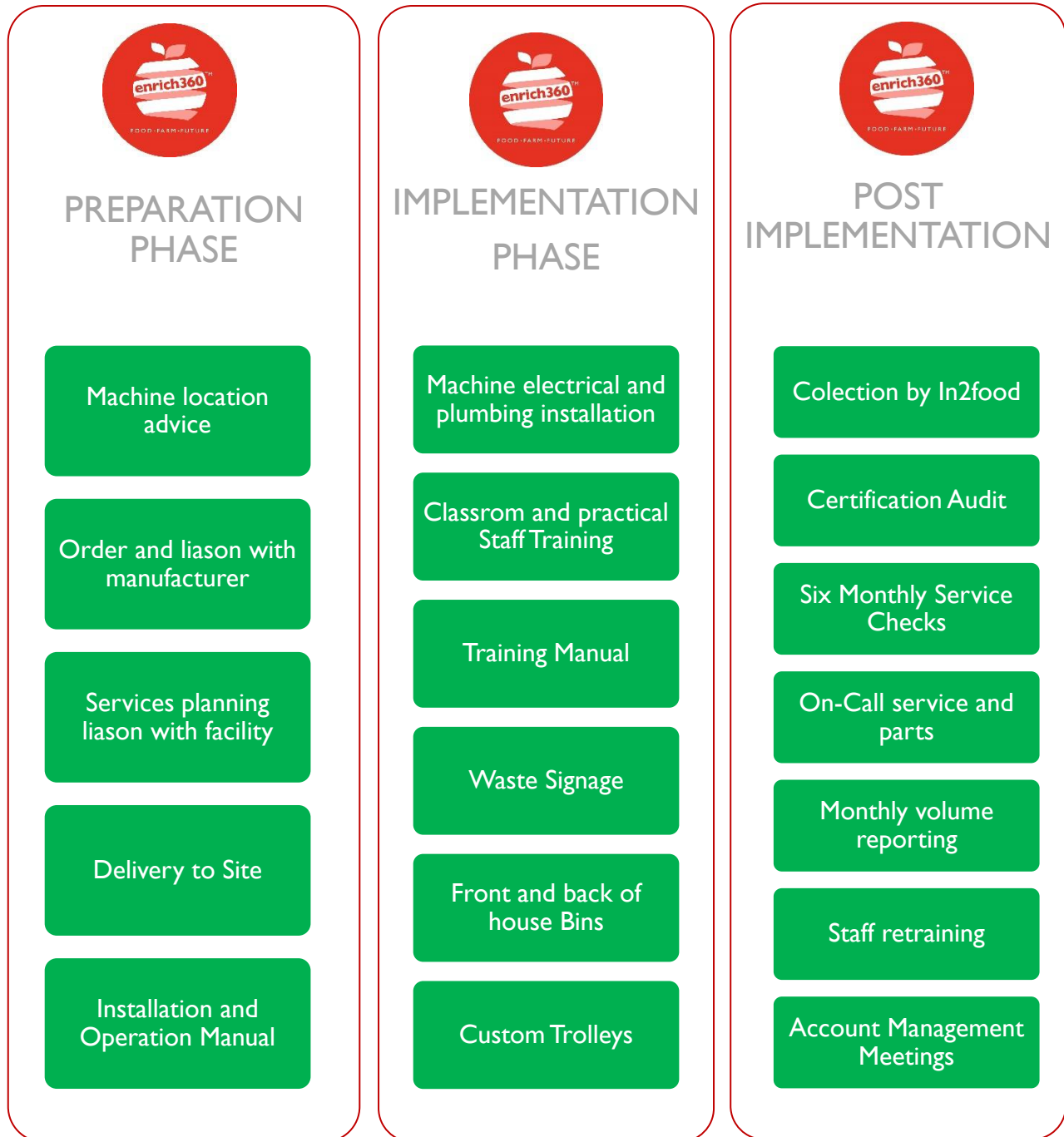
Enrich360 is a program designed to save our soil, remove food waste from landfill and provide us with more nutritious, tasty food.

IKEA is one of the first big food companies in Australia to use the program, closing the loop between food waste and our suppliers.

How does it work? Food waste from our café and restaurant is collected and put into an organics recycling machine which turns the left over organics into bio mass. The bio mass is collected by the Enrich360 team and is taken to the IKEA fruit and vegetable supplier as fertiliser for their farm. It is used to improve their soil and helps them grow better produce. The more people eat at IKEA Richmond, the more local farmers benefit and the better things get for everyone.



Supporting your enrich360[®] Lifecycle



Every lifecycle is tailored to suit your business.